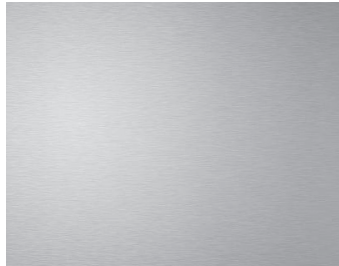


# MATERIAL BOARD

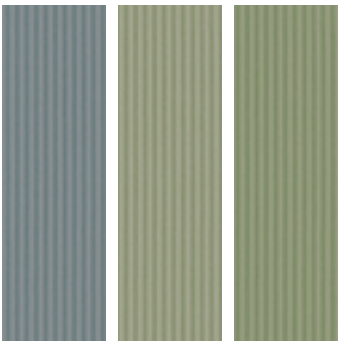
Received  
Planning Division  
08/04/2023



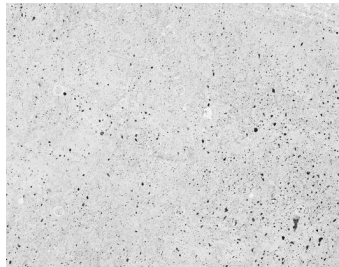
**1**  
CERACLAD  
(FRESH CREAM)



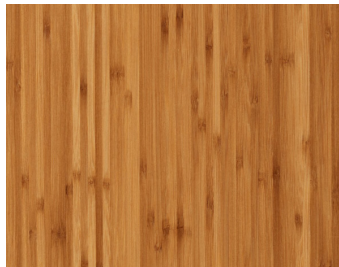
**6, 7, 8, 9, 11**  
ANODIZED  
ALUMNIMUM



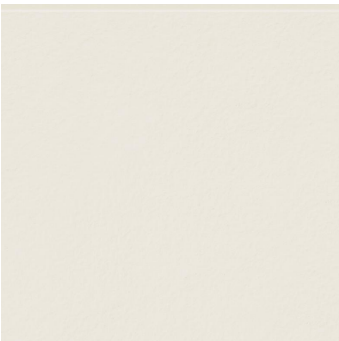
**2**  
CERACLAD  
ZEN GARDEN  
(MULTIPLE COLORS)



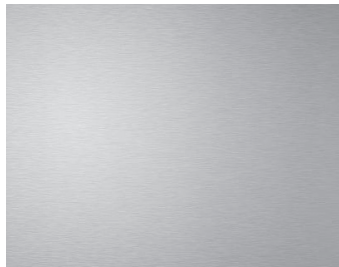
**10**  
EXPOSED CONCRETE



**12**  
WOOD SOFFIT



**3**  
CERACLAD SMOOTH  
(SILK)



**13**  
POWDER COATED  
STEEL



**4**  
CERACLAD MOSAIC  
TILE (WHITE)



**15**  
WINDOWS  
VINYL (WHITE)

MAY 20, 2022

REFERENCE ELEVATIONS FOR  
MATERIAL KEY AND LOCATIONS